

# Careers Network NEWSLETTER

Summer 2021 **Edition 12**

**Welcome** to the **summer 2021** edition of the Careers Network Newsletter. In this edition we have included **updates** about what is happening locally with different services, information about **new resources**, **news** and **events**. Please feel free to share with **colleagues**.

## New wellbeing resource for young people

Health and wellbeing are so important, and sometimes we need a little help to make things better.

Young people are being reminded they are not alone and are being encouraged to look after their health and wellbeing as a new resource made for local teens, by local teens, is launched.

The new local web content is one of several resources being launched on the new LiveWell website over the coming weeks and months.

The new information, advice and guidance, for young people 12 to 18 years, covers a wide range of aspects of life, including mental and physical health, relationships, safety, money, education, bereavement, bullying, eating habits and exam stress.

The page has been built alongside local young people. They told us:

- They didn't know where to go to get local and national trusted health information.
- They weren't aware of all the services available and said there was a lack of information.
- They preferred doing things online.
- They talked about having a place where they could

find information to help themselves which could direct them to an online chat or text messaging service.

- They wanted trusted information with the right advice.

With COVID-19 and lockdown, more young people have turned to digital to find help and support.

It's important for young people to know they're not alone and there is lots of help out there.

The new website can be visited at [livewell.nelincs.gov.uk/youngpeople](https://livewell.nelincs.gov.uk/youngpeople)

In addition <https://livewell.nelincs.gov.uk/your-wellbeing/wellbeing-service/> is a website for adults covering all aspects of wellbeing

Students can also speak to the school nurse about any health & Wellbeing needs. The school nurse service can be contacted by texting 07507 331620.

### Your health and wellbeing

#### Urgent help

If you need immediate mental health support, you can access the 24/7 telephone support line for mental health available to all ages on 01472 226251 option 3.

If you have seriously injured yourself or your health is in immediate danger please call 999.



#### Help is here

You are not alone. Here you can find out what help is out there and who you can speak to to get better. What do you need help with?

##### Your safety

##### Your mental health

##### Your physical health

##### Your relationships

##### Your education - Lincs 2

## Focus on Autism

Your Local Offer is the place that provides and directs you to information that will support children and young people with Special Educational Needs and Disabilities (SEND).

School life as a teenager with autism

*"Because she was older and with support from her mum, she was able to identify and communicate what was going wrong at school and with her friends."*

*"Laura was diagnosed with autism as a teenager in Year 9. She was then triaged to the Specialist Advisory teacher for support by the school's SENCo as there were concerns about her lack of academic progress and social vulnerability."*

Read the full story to see how [Laura grew in confidence](#) with support from her mum and local services.

## Teen Life

Programme for parents of autistic teens

**Teen Life Programme** is a virtual delivery programme for parents/carers of young people aged 10 to 16 years on the autism spectrum.

Read more information on the [Teen Life programme](#) and sign up.

There is more like this on the [Local Offer](#).





The Humber Outreach Programme has lots of free resources and events to offer over the coming week and months and if you require any

more information, please visit <https://hop-humber.co.uk/> or contact [Fiona.Berry@hull.ac.uk](mailto:Fiona.Berry@hull.ac.uk)

Access to **HOPPathways** via <https://www.lincs2.co.uk/> with resources to support with:

- Pathways for the future
- Pathways to exam success
- Pathways to build resilience
- Pathways to support wellbeing
- Pathways to motivate

## Festival of Skills

We are delighted to announce that the Festival of Skills will be taking place from the **14th to 18th June 2021**. The Festival is aimed at Year 10 students from across the Humber Region. The Festival will bring together a wealth of employers from across the region from different sectors to give students an insight into the workplace. Students will have the opportunity to watch a short pre-recorded video by each employer followed by an industry challenge that can be completed in the classroom, many of the employers will be available via live zoom link to answer student's questions during the session. The schedule of activity will be available early May to allow schools to plan.

## T Level Resources for Teachers & Careers Advisers

A brand-new set of resources for teachers and careers advisers to help raise awareness of T Levels has launched recently.

New resources include:

- Digital Toolkit
- Activity Pack for Students
- Staff Room posters
- Summer Activity Plan

The new resources join existing video explainers, presentation slides, student posters, graphical explainer film and a comprehensive Teacher Guide.

Browse all T Level resources, including the new additions using the button below...

[VISIT THE T LEVEL PAGE NOW](#)

## Humber Apprenticeship Showcase

Taking place on the **23rd June 2021** is a dynamic virtual event to help young people (aged 14 and over) develop their knowledge of apprenticeships and the benefits they can offer. The Humber Apprenticeship Showcase will bring apprenticeships to life with contributions from employers and apprentices who can share their positive personal experiences. Further details coming soon.

## Humber Virtual Careers Fair

Easy access to local employers' information, further and higher education colleges, sixth forms, training providers via exhibition rooms and plenty of archived video content.

<https://humbercareers.co.uk/>

## The Pay Index

This is a digital application to help students as they begin their decision-making processes. The Pay Index mission's is to provide pay transparency through data and visualisations over the course of a school student's lifetime-celebrating every milestone they achieve and sign-posting what they require along the way.

Students can access The Pay Index and see the benefits of University and apprenticeships relevant to them.

## Young People's Support Services

### Targeted careers information, advice and guidance services

YPSS continue to offer targeted careers information advice and guidance services which is currently being undertaken remotely, predominantly through the use of Microsoft Teams.

Thank you for your ongoing support whilst we continue to adapt to this new way of working and for helping this to go as smoothly as possible.

During March-April we start planning our follow up work for the upcoming year 11 leaver cohort. The MI team will be making contact to obtain full cohort lists from academies, which enables us to effectively undertake our statutory duties and for future destination reports should you require these.

Just a reminder that we also offer additional optional purchased services to assist academies with meeting the responsibilities covered in the Careers Strategy and Gatsby Benchmarks, such as single or 3-year destination reports and giving careers guidance to students who fall outside of YPSS' targeted services.

All YPSS Careers Advisers are qualified to at least level 6 and we hold the Matrix standard for quality information advice and guidance.

Please contact [YPSS.MIS@nelincs.gov.uk](mailto:YPSS.MIS@nelincs.gov.uk) for further information.

## RWE deploys first local apprentices on Triton Knoll

The team at Triton Knoll offshore wind farm is celebrating the success of the RWE apprenticeship scheme. Four, young apprentices have already completed its three year training programme and gained employment with RWE working on the offshore wind farm.

RWE launched its Wind Turbine Engineer apprenticeship scheme in 2016 to meet the growing demand for technicians for its expanding offshore wind portfolio and to help young locals start a career in one of the fastest growing sectors in the UK. Four new apprentices from the Grimsby area, recruited in 2020, are now following in the footsteps of the first group of apprentices-turned-technicians.

Triton Knoll O&M manager, Kerry Monument said, *"I help manage the scheme for RWE and I feel really proud to be able to give a young person the opportunity of a career in an expanding industry. It's a key thing that a company like RWE should be doing."* The new apprentices have just completed their first year of studies and report an overwhelmingly positive experience so far.

Amelia Coulam had her sights set on an engineering career from an early age and had studied engineering before applying for the Triton Knoll apprenticeship. *"It's my dream job,"* she said: *"I've always wanted to work in renewables. The first year has been challenging with the Covid pandemic but we have continued to study. The best part so far was my first practical assignment. I was given a technical drawing, tools, and materials, and from that I built a fully functional wind turbine component."*

Mollie Mills switched careers from horse care management to join the scheme. She said, *"I love the idea of working offshore and that it's a practical job. I'm really looking forward to getting out to the turbines, getting some hands-on experience."* Both Amelia and Mollie hope to start work as wind turbine technicians at Triton Knoll once they graduate from the apprenticeship scheme in 2023.

The 857MW Triton Knoll offshore wind farm is currently under construction off the coast of north Lincolnshire and, once fully operational will be capable of generating enough renewable energy for the equivalent of over 800,000 typical UK households. For more information about the project, please visit: [www.tritonknoll.co.uk](http://www.tritonknoll.co.uk).



## Creative Connections Competition Update

On behalf of the Youth Action group, a huge thank you goes out to all those young people who shared their perspectives on loneliness and isolation using creative methods through this competition.

We received an amazing response to the competition with entries that included poems, songs, articles, stories, paintings, photos, posters, a short film and a video of a dance performance. The judging is taking place now and we will be announcing the winners during early May and entries selected to feature in an anthology book will be published this summer.

For anyone who entered we will be in touch soon with more information and some goodies to thank them for their time and sharing their work with us. Also, later in the year some of the work will be used in printed displays and through websites and social media to reach out to other young people.

For more information on the work of Youth Action or Creative Connections please email [pippa.curtin@nelincs.gov.uk](mailto:pippa.curtin@nelincs.gov.uk)



## Women into Manufacturing and Engineering (WiME)

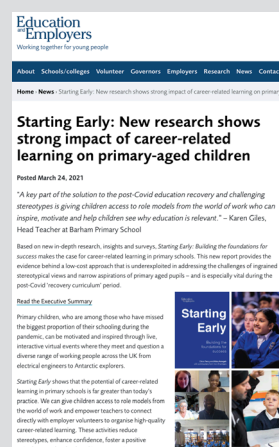
WiME has got a new set of YouTube videos on the Wind Power industry which can be found at:

<https://www.lincs2.co.uk/information-and-inspiration/employer-related-activities/>

## Starting Early: New research shows strong impact of career-related learning on primary-aged children

Based on new in-depth research, insights and surveys, Starting Early: Building the foundations for success makes the case for career-related learning in primary schools. This new report provides the evidence behind a low-cost approach that is underexploited in addressing the challenges of ingrained stereotypical views and narrow aspirations of primary aged pupils – and is especially vital during the post-Covid 'recovery curriculum' period.

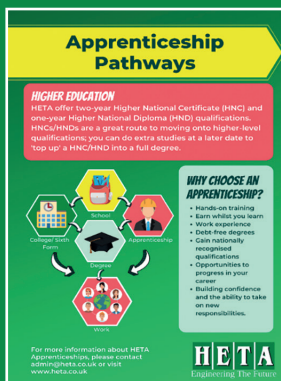
<https://www.educationandemployers.org/startingearly/>





### HETA Workshop Tours

Supporting Gatsby Benchmarks 5 & 6 Year 10 students will have the opportunity to tour all aspects of the engineering workshops and speak to experienced instructors and students in their first year training. For information and to book please contact [kaylie.dixon@heta.co.uk](mailto:kaylie.dixon@heta.co.uk)



### Resources for Schools

We have a range of resources available including:

- HETA Engineering Apprenticeships Prospectus
- Interview Technique Posters
- CV Dos and Don'ts
- Common Interview Questions
- HETA Site Tour Videos

For access to these resources, [click here](#).

### Health & Wellbeing in Schools

2020/21  
Summer Term 1

20<sup>th</sup> Apr – 28<sup>th</sup> May



Session	Date(s)
Restorative Practices in Education to Support Wellbeing for Education Return Online training session To book a place visit <a href="#">Eventbrite</a>	20 <sup>th</sup> April, 4pm-5pm
Every Interaction Matters Webinar To book a place visit <a href="#">Eventbrite</a>	21 <sup>st</sup> April, 4pm-5pm 26 <sup>th</sup> April, 9:30am-10:30am
PHSE Coordinators Meeting Meeting To attend visit <a href="#">Eventbrite</a>	22 <sup>nd</sup> April, 3:30pm-4:45pm
Emotion Coaching in Education to Support Wellbeing for Education Return Online training session To book a place visit <a href="#">Eventbrite</a>	28 <sup>th</sup> April, 4pm-5pm
Sexual Health Awareness Online training session To book a place visit <a href="#">Eventbrite</a>	29 <sup>th</sup> April, 3:30pm-5pm
Assessment in RSE Online training session To book a place visit <a href="#">Eventbrite</a>	5 <sup>th</sup> May, 3:30pm-4:30pm 10 <sup>th</sup> May, 9:30am-10:30am
Loss & Bereavement to Support Wellbeing for Education Return Online training session To book a place visit <a href="#">Eventbrite</a>	5 <sup>th</sup> May, 4pm-5pm
Post-traumatic Growth to Support Wellbeing for Education Return Online training session To book a place visit <a href="#">Eventbrite</a>	19 <sup>th</sup> May, 4pm-5pm
SEMH Champions Meeting Meeting To attend contact <a href="mailto:Amy.Chilvers@nelincs.gov.uk">Amy.Chilvers@nelincs.gov.uk</a>	27 <sup>th</sup> May, 1pm-3pm



Since 2019, members of the Centre for Industry Education Collaboration (CIEC) team have been writing new activities for the [Explorify website](#), and these activities are now going live on the Explorify website. The team at the Wellcome Trust take our ideas, and then source the amazing images, timelapse photography and videos to bring these ideas alive. Here are some of the team's favourites:

[Hedgerow Heroes](#)

[Can you see the sunrise in space?](#)

[Funny Bones](#)

[Nothing lives here ..... or does it?](#)

[How is the poinsettia different to other flowering plants?](#)

## Excellerators Work Insight Scheme

For students unsure about a legal career and who would like a better understanding of careers in the sector applications are now open for the 2021 Excellerators Virtual Work Insight Scheme which aims to support talented and enthusiastic students who want to learn more about the professional environment of the City. This opportunity is designed to enrich young talent across the UK, with essential employability skills through interactive workshops, hands-on tasks and networking with law professionals.

What will students gain?

- Get to know the legal world: Interactive sessions with our range of legal and business services staff
- Skills-based workshops including 'how to make your application stand out' and 'how to build your personal brand'
- Practical tasks that will hone business acumen and creativity in a commercial context
- Become part of the Slaughter and May work experience alumni network for ongoing support and signposting to other opportunities

Candidates must be in Year 12 at a UK state school at the time of applying, studying any subject and achieved a minimum of 5 GCSEs at grades 6-9. Applications can be submitted [here](#). For more information, [email us](#) or visit our [blog](#)