

## Early Years Education Recovery- Experts and Mentors and Childminders

These programmes have been rolled out nationally and aim to provide bespoke support to 7,500 early years settings and childminders to address the impact of the pandemic on children in their care. Please do share this information with childminders and nurseries you know.

### Experts and Mentors Programme (for Nurseries):

- Applications for nurseries and nursery classes to request support from the **DfE Experts and Mentors Programme** for the Spring 24 term open on the 6<sup>th</sup> October and are **open until 10<sup>th</sup> November 2023**.
- The support is free and available across the country for eligible settings.
- Settings will receive the support of both an Expert (to work with setting leaders) and a Mentor (providing support to up to 3 practitioners) **over one term**. Experts and Mentors are fellow early years professionals, who are passionate about supporting others to improve practice and outcomes for children.

For more information or to apply, go to [Early Years Experts and Mentors programme](#)

### Childminder Mentor Programme:

- **Applications for childminders to request support from the DfE Childminder Mentor programme** for the Spring 24 term are open until **30<sup>th</sup> November 2023**.
- By joining the programme, childminders will receive the support of fellow early years professionals, who are passionate about supporting others to improve practice and outcomes for children.

Please see the **application page** to request support from the programme here: [COVID-19 Recovery Childminders | Hempsalls](#)

---

## Consultation/Survey's

### **Early Years Foundation Stage Assessment Support Survey**




The Department for Education has launched a short survey to seek the views of early years practitioners, teachers and school and setting leaders on assessment in the Early Years Foundation Stage (EYFS). Feedback from the sector will help shape future policy development in this area.

If you work in the early years, please take the time to fill in this [short, anonymous survey](#).


Have your say by **Tuesday 3<sup>rd</sup> October**.

September 2023

## Dates for your Diary

Date	Event	Delivered By
<p><b>From 13<sup>th</sup> September 2023</b></p>	<p><b>Making Sense of Autism</b></p> <p>Gain a better understanding and awareness of autism and the way it affects children in the early years. See the flyer below for more detail</p>	
<p><b>5<sup>th</sup> October Online 18:30 – 19:30pm</b></p>	<p><b>Book your free place on our upcoming nutrition-focused Alliance Connects</b></p> <p>From October 2023, the Alliance will also be running a series of free virtual Alliance Connect events on the importance of nutrition in early years settings. The sessions will cover a range of topics including creating a positive mealtime environment, dietary requirements and hydration.</p> <p>The first session, which will take place <b>Thursday 5 October from 6.30pm - 7.30pm</b>, will focus on planning balanced menus for children in the early years, and how providers can ensure they are meeting national recommended nutrition guidelines and gain confidence in planning healthy menus for children.</p> <p><u><a href="#">EYA Portal &gt; Online training and networking &gt; Event details (eyalliance.org.uk)</a></u></p>	
<p><b>7<sup>th</sup> October 10:00 to 15:15 Mercure Nottingham Sherwood Hotel</b></p>	<p><b>Foundation Years Live: Nottingham</b></p> <p>In this session, we will be joined by Jamel Carly Campbell to discuss positive relationships in EYFS practice, Ofsted to discuss EYFS reforms 2021 two years on and Early Years Education specialist Jan Dubiel.</p> <p><u><a href="#">Foundation Years Live: Nottingham Tickets, Sat 7 Oct 2023 at 10:00   Eventbrite</a></u></p>	

September 2023

Date	Event	Delivered By
<p><b>18<sup>th</sup> October</b> <b>18:30 to 19:30</b></p> <p><b>Online</b></p>	<p align="center"><b>FREE Alliance Connect: Let's talk gender stereotypes</b></p> <p>In this thought-provoking free Alliance Connect, we will:</p> <ul style="list-style-type: none"> <li>• discuss what gender stereotypes are</li> <li>• think about how educators can influence the stereotypes children hold</li> <li>• reflect on how the commercial sector perpetuates stereotypes based on gender</li> </ul> <p>discuss how we can show families that all staff, regardless of gender, are equally capable of caring for and educating young children</p> <p><a href="#">EYA Portal &gt; Online training and networking &gt; Event details (eyalliance.org.uk)</a></p>	
<p><b>2<sup>nd</sup> November</b> <b>10:00 to 11:30</b> Or <b>14:00 to 15:30</b> Or <b>17:00 to 18:30</b></p> <p><b>Online</b></p>	<p><b>Early Help and Team Around the Family (TAF) information sessions</b></p> <p>The session will cover the updated procedures on how to make an early hep referral and the TAF arrangements information.</p> <p align="center"><b>All sessions are the same you only need to attend ONE</b></p> <p>Thursday 2<sup>nd</sup> November 10am – 11:30am <a href="#">Click here to join the meeting</a>  Thursday 2<sup>nd</sup> November – 2pm – 3:30pm <a href="#">Click here to join the meeting</a>  Thursday 2<sup>nd</sup> November – 5pm-6:30pm <a href="#">Click here to join the meeting</a></p>	<p align="center"><b>Early Help and TAF team</b></p>

Date	Event	Delivered By
<p><b>22<sup>nd</sup> November</b> <b>19:00 to 21:30</b></p> <p><b>Online</b></p>	<p><b>All Things Sensory</b></p> <p>A workshop exploring the sensory needs of children with autism, social communication difficulties and sensory processing difficulties and practical strategies to support their needs</p> <p>Suitable for: Parents or practitioners - early years and primary</p> <p><b>Venue:</b> Via Zoom <span style="float: right;"><b>Cost:</b> £42</span></p> <p>Please contact Jaci or Nikki on 01895649211 or <a href="mailto:allthingsautism ltd@gmail.com">allthingsautism ltd@gmail.com</a> to book your place on this course</p> 	<p><b>All Things Autism and Inclusion</b></p>



Early Years



**Making Sense of Autism**

Gain a better understanding and awareness of autism and the way it affects children in early years.

**Who is this training for?**  
This is a raising awareness module for anyone working in early years settings. This includes teaching and support staff, office and ancillary staff, caterers, caretakers, transport staff and governors.

**Who is this training for?**

- Enhance your understanding and awareness of autism and how autism can affect children in early years settings
- Know the importance of understanding the individual child and their profile of strengths and needs
- Identify potential barriers to learning for autistic children
- Begin to make reasonable adjustments in the way you support autistic children
- Reflect on the information you need to collect for creating a one-page profile

- Developed by leading autism specialists
- Up to date with the latest research
- Enhances your CPD
- Free resources and frameworks linked to Ofsted
- Optional certification

3hr 30 mins

Refreshments Provided

**Hub name:** Cambridge Park Academy

**Date:** Please see schedule

**Time:** Please see schedule

**Details:** All training taking place at the Town Hall

**Book your training now:**  
Email us at: [sbates@cambridgepark.het.academy](mailto:sbates@cambridgepark.het.academy)  
Call us on: 01472 230110 ext01





For more information and free resources visit:  
[www.autismeducationtrust.org.uk](http://www.autismeducationtrust.org.uk)



Early Years

**Early Years Training Schedule**  
Please book via Sue Bates – [sbates@cambridgepark.het.academy](mailto:sbates@cambridgepark.het.academy)

- 13<sup>th</sup> September – 17:00 – 20:00 – Assembly Room
- 27<sup>th</sup> September – 17:00 – 20:00 – Assembly Room
- 11<sup>th</sup> October – 17:00 – 20:00 – Banqueting Suite
- 1<sup>st</sup> November – 17:00 – 20:00 – Banqueting Suite
- 15<sup>th</sup> November – 17:00 – 20:00 – Banqueting Suite
- 29<sup>th</sup> November – 17:00 – 20:00 – Banqueting Suite
- 13<sup>th</sup> Dec 23 – 17:00 – 20:00 – Bremerhaven Room
- 10<sup>th</sup> Jan 24 – 17:00 – 20:00 – Bremerhaven Room
- 31<sup>st</sup> Jan 24 – 17:00 – 20:00 – Banqueting Room
- 7<sup>th</sup> Feb 24 – 17:00 – 20:00 – Bremerhaven Room

# Early years Network Meeting 23/24



Term:	Venue:	Date:	Time:	Booking Link:
Autumn Term '23	<b>Grimsby Town Hall</b> <ul style="list-style-type: none"> <li>Update on EYIF/graduated response paperwork</li> <li>A settings view on inclusion funding</li> <li>Michelle Baynham (Speech and Language Therapist)</li> </ul>	17 <sup>th</sup> October 2023 2:00pm start 4.30pm finish	14.00- arrival 14.15-14.30- Finance update from Corrinne 14.30- 14.45update on EYIF and graduated response 14.45-15.10- Butterflies (A settings view on Inclusion) 15.10-15.25 Break 15.30- 16.30 Speech and Language training; speech sounds	<a href="#">Early Years Network Forum Autumn Term Tickets, Tue, Oct 17, 2023 at 2:00 PM   Eventbrite</a>
Spring Term '24	<b>Grimsby Town Hall</b> <ul style="list-style-type: none"> <li>Michelle Baynham (Speech and Language Therapist)</li> <li>Sleep with Carol Bachelor</li> </ul>	12 <sup>th</sup> March 2024 1.00pm start 4.30pm finish	12.45-1.00 arrival 1.00-1.15 Finance update from Corrinne 1.15-3.15 Sleep training 3.15-3.30 Break 3.30-4.30 Speech and language training; receptive language	<a href="#">Early Years Network Forum Tickets, Tue, Mar 12, 2024 at 1:00 PM   Eventbrite</a>
Summer Term '24	<b>Grimsby Town Hall</b> <ul style="list-style-type: none"> <li>Michelle Baynham (Speech and Language Therapist)</li> <li>Hearing and Vision team</li> </ul>	11 <sup>th</sup> June 2024 1.00pm start 4.30pm finish	12.45-1.00 arrival 1.00-1.15 Finance update from Corrinne 1.15-3.15pm Hearing and Vision support strategies. 3.30-4.30 Speech and language training; using Lego to support talking and understanding words	<a href="#">Early Years Network Forum Tickets, Tue, Jun 11, 2024 at 1:00 PM   Eventbrite</a>



Join us at the creative feature area

## What's New?



### **NEW Nutrition Support Programme – plus free nutrition resources and training events for early years providers**

We know that the early years of a child's life are critical when it comes to developing positive attitudes to healthy, nutritious food, and that early years professionals have a key role to play in this.

We also know, however, that this can often be a challenging task. Not only do settings have to balance offering healthy and balanced meals and snacks with dietary preferences and allergies, but obstacles such as food refusal and creating positive eating environments can make nutrition provision complicated.

That's why the Early Years Alliance is so pleased to launch the [Alliance Nutrition Support Programme](#), offering early years settings tailored advice and support from expert dietitians and nutritionists.

The Nutrition Support Programme aims to empower early years providers to offer nutritious and engaging food, while supporting children to learn about the importance of a healthy diet.

Our team of qualified dietitians and nutritionists, with experience of supporting children in the early years, work with setting managers, educators and cooks on a range of topics including menu reviews and allergens advice.

The programme is split into the following three levels of support to enable settings to tailor support to best suit their needs:

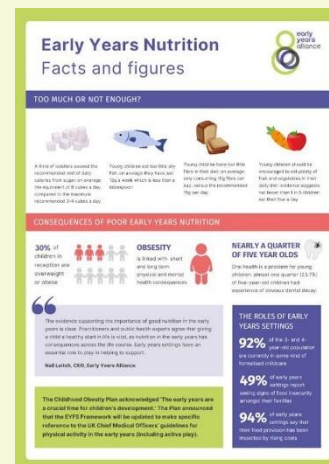
- First Steps Package: provides 10 hours of support to guide improvements in food provision.
- Quality Mark Package: provides 22 hours of support to achieve our detailed assessed award, helping settings exceed EYFS requirements.
- Premium Package: provides 40 hours of comprehensive support across all aspects of healthy eating and good hydration.

**All providers who register their interest for the programme will receive a free 30-minute taster support session. [Nutrition Support Programme | early years alliance \(eyalliance.org.uk\)](#)**

## Access free nutrition information and guidance in our early years nutrition resource pack

To celebrate the launch of the Nutrition Support Programme, providers can access a new free resource pack exploring nutrition and healthy eating in the early years. The resource pack includes menu advice, guidance on creating healthy habits and food activity ideas, as well as a series of recipe cards.

Simply fill out our short form to get access to the complete pack – completely free!



Access the free Early Years Nutrition resource pack



## Recording now live

On 13 September, we were pleased to welcome Brighter Start: East London Early Years Stronger Practice Hubs who talked about the ShREC approach, Ofsted who discussed the two years since 2021 EYFS reforms, the Department for Education for an update on the Early Years Foundation Stage Profile.

This session provided a fantastic opportunity to engage, connect and share best practice with the Foundation Years community. A huge thank you to everyone who attended and to our brilliant speakers!

If you would like to catch up online, you can watch the video recording of the event [here](#). Stay tuned for the latest announcements about upcoming events in our newsflashes and on [social media](#)

## Physical development in early childhood: a new blog from Early Education

Early Education Associate Clare Devlin [explores the importance of physicality for young children](#), illustrating the ways in which children can be supported to grow and develop, with links to useful resources on this topic.



## **Did You Know?**

**Did you know there are grants available to support armed forces families?** Please see information below regarding two grants that may be of interest.

### **Armed Forces Families Fund Early Years Programme**

This programme will award grants of between £5,000 and £80,000 on behalf of the MOD's Armed Forces Families Fund Early Years Programme for projects which help enhance early childhood education and childcare settings of young children from Armed Forces families. For more information, eligibility criteria and closing dates please see link below:

<https://covenantfund.org.uk/programme/armed-forces-families-fund-early-years-programme-2023-24/>

### **ABF The Soldiers' Charity Invites Applications for Final Round of 2023**

ABF The Soldier's Charity provide grants to charities and organisations that provide lifetime support to soldiers, veterans and their immediate families when they are in need. For more information, eligibility criteria and closing dates please see link below:

<https://soldierscharity.org/need-our-help/charity-grants/>



-----

## **Latest Updates from Department of Education**

Nothing to report

## **Latest Updates from GOV.UK**

### **18<sup>th</sup> September Sector Email**

#### **Action for early years settings and schools with reception schools: Take part in the Early Years Foundation Stage assessment support survey**

The Department for Education has launched a short survey to seek the views of early years practitioners, teachers and school and setting leaders on assessment in the Early Years Foundation Stage (EYFS). Feedback from the sector will help ascertain what support, if any, would be beneficial for supporting effective assessment in the EYFS.

If you work in the early years, please take the time to fill in this short, anonymous survey: [Early Years Foundation Stage \(EYFS\) assessment support survey](#). Have your say by Tuesday 3<sup>rd</sup> October.



## **Latest Updates and News from Ofsted**

### **Early years inspections: statistical commentaries 2022 to 2023**

**Page summary:** Commentaries on early years inspection data.

**Change made:** New commentary added: 'A focus on childminders'.

**Time updated:** 10:01am, 7 September 2023

### **Best start in life: a research review for early years**

**Page summary:** A three-part subject-based curriculum research review focused on early year education.

**Change made:** Added 'Best start in life part 2: the 3 prime areas of learning'.

**Time updated:** 9:30am, 8 September 2023

### **Rutland childminder agency closure: information for childminders**

**Page summary:** This guide is for childminders who are choosing to move to Ofsted following the closure of Rutland childminder agency.

**Change made:** First published.

**Time updated:** 9:49am, 12 September 2023

### **Childcare on domestic premises**

**Page summary:** Guidance for applicants and registered providers of childcare on domestic premises

**Change made:** First published.

**Time updated:** 9:30am, 21 September 2023

## **Ofsted News**

September 2023

### **Early years and childcare**

[Carrying out Childcare Register compliance inspections](#) - Updated the 'Making arrangements to inspect a nanny' section to clarify that virtual inspections may take place if we are unable to gain consent to enter the home where a nanny is working.

[Statistical commentary: a focus on childminders](#) - This commentary looks at a range of analysis and trends that might help explain some of the barriers to joining the childminding profession and those that may contribute to childminders leaving.

[Best start in life: a research review for early years](#) - This is three-part subject-based

curriculum research review focused on early years education. We have added [‘Best start in life part 2: the 3 prime areas of learning’](#). See also the accompanying [press release](#).

[Blog: giving all children the best start in life](#) - Blog post by Lee Owston, Deputy Director, Schools and Education, reflecting on the importance of this [strategic priority](#).

[Webinars: early years curriculum - a focus on communication and language](#) - We have published five short webinars. Three of them are for registered early years providers and schools. These explain: why communication and language are so important, what a good curriculum should look like to support development of communication and language, and the ways that children make progress through knowing and remembering more. The other two are specific to the type of setting: one for registered early years settings and one for schools, both explaining how we look at communication and language on inspection.

[Rutland childminder agency closure: information for childminders](#) - A guide for childminders who are choosing to move to Ofsted following the closure of Rutland childminder agency. We also organised a [webinar](#) to provide further information for affected childminders.

[Consented addresses for childminders and domestic childcare](#) - Updated consented addresses for childminders and domestic childcare as at 31 August 2023.

[Childcare protocols between Ofsted and other organisations](#) - Updated the [‘Protocol between Ofsted and services managed by local authorities: early years childcare providers’](#).

We have also added the [‘Protocol between Ofsted and services managed by local authorities: children’s social care providers’](#).

## And finally, some fun stuff

There has been a lot happening in our area over autumn. Here is a selection of some of the activities and events that have recently been shared by FFIS. To keep up to date with what's going on follow FFIS on social media

 <https://www.facebook.com/familiesfirstnel>

 [https://www.twitter.com/FF\\_NELincs](https://www.twitter.com/FF_NELincs)

 <https://www.instagram.com/familiesfirstnel/>



**£12**

**CLEETHORPES COMMUNITY CENTRE & EDUCATION**

**THE TRIN CENTRE**  
**HALLOWEEN club**

10-3PM AGES: 5-11 YEAR OLDS

**SPORTS - ARTS AND CRAFTS - DISCO - HALLOWEEN GAMES**

23 - 24 OCTOBER, 2023  
THE TRIN CENTRE, CLEETHORPES, DN35 8UN

Join us if you dare, for a Halloween scare! Our spooky club awaits, so mark the date! Book online today at [www.ccse.org.uk](http://www.ccse.org.uk) for only £12 a day. All kids will need to bring pack up and drinks.



**THE LITTLE SPOOKY CIRCUS PLAY SESSION**

31st Oct @ Sussex Pavillion, Cleethorpes  
10.30am-11.30am

Free play based session  
sensory toys  
circus toys

**BOOK NOW**

Fun and games suitable for children of all ages



**Halloween Party**  
**Immingham Civic Centre**

Friday 27<sup>th</sup> October  
4.00pm - 6.00pm

Fun and games with 100% Entertainment  
Prizes for best fancy dress  
Party food and refreshments

Tickets £2.00  
Available from Immingham Civic Centre Hub reception Tel : 01469 727272



**FREE EVENT**

**THE CREEPY AND THE CRAWLY**

Saturday 28th October  
11am-3pm FRIARGATE SQUARE, NEAR BB'S

**Trick or Treat Trail**

**Creepy Crawly Show**  
Explore a realm teeming with eight-legged wonders, slithering snakes, and intriguing cockroaches. You can even hold them if you dare!

**Crafts & Face Painting**

**Plus - Spooky Roaming Acts**